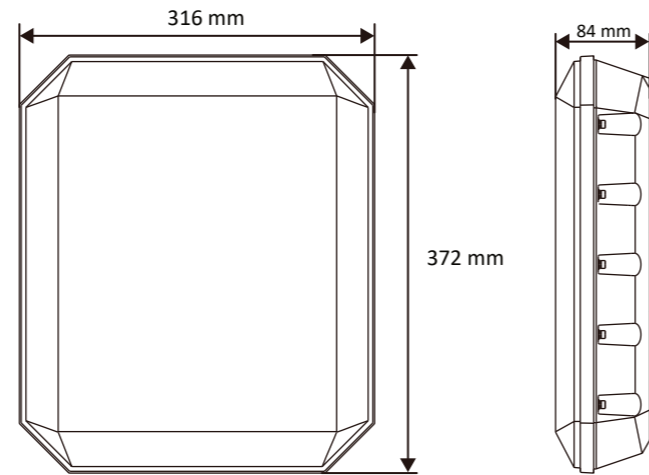


1 Appearance

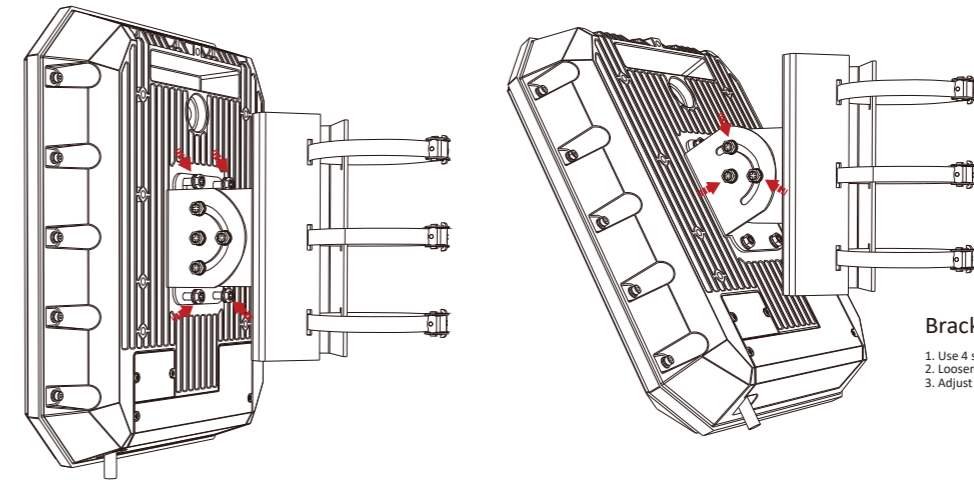
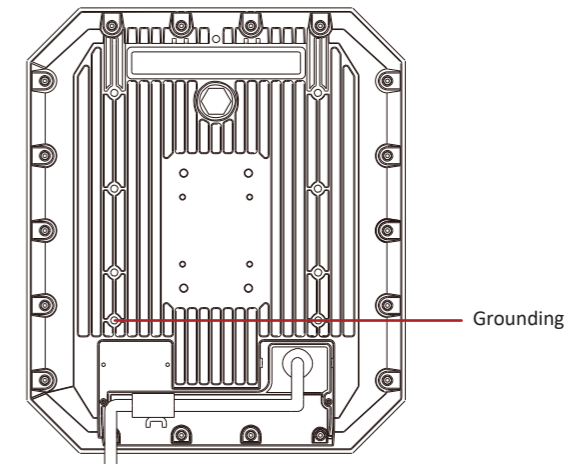


3 Installation

Screw: SC-PSFM4×10-SUS-GB9074.8

Notes:

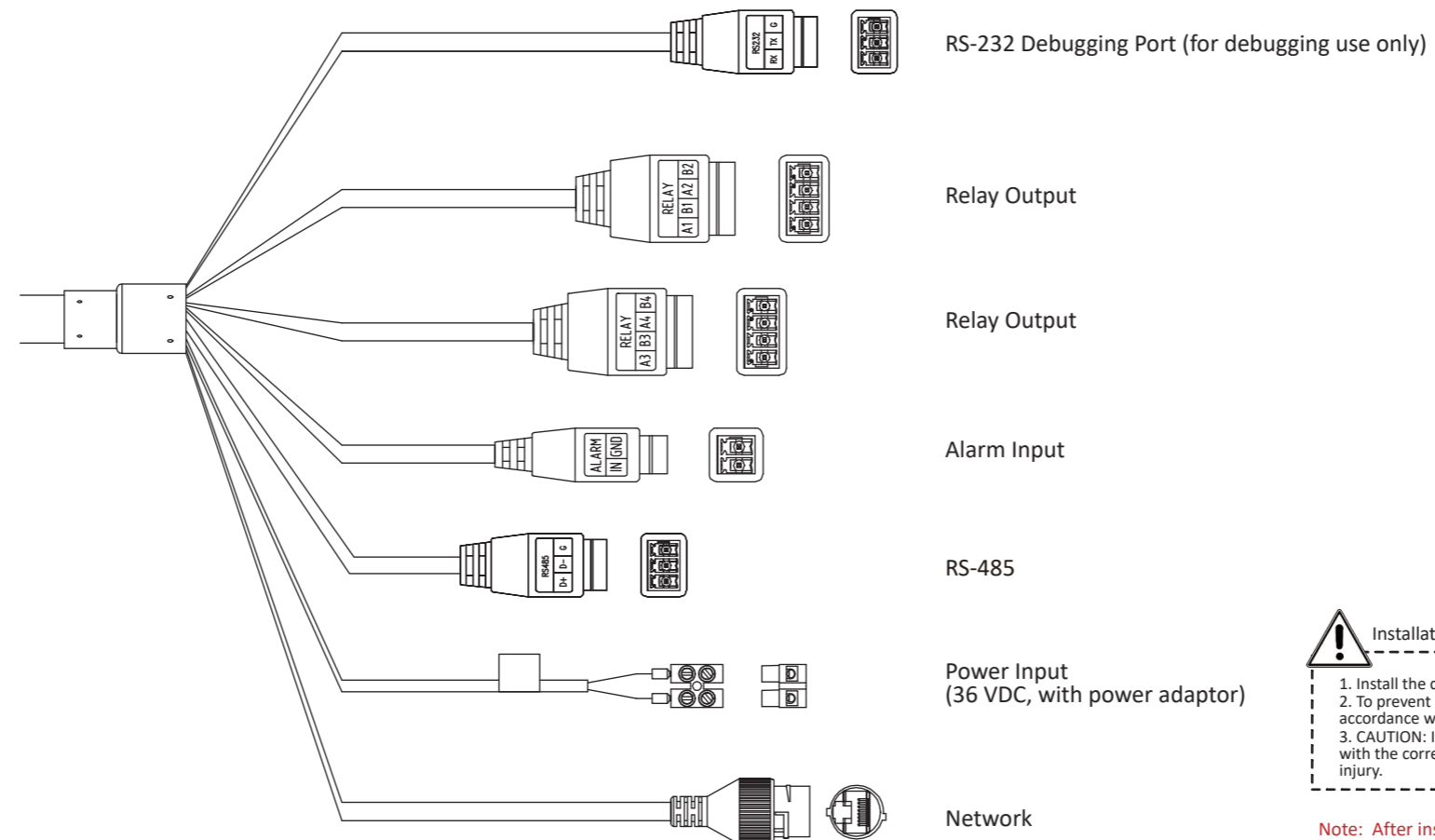
1. If using latitude and longitude/GPS to calibrate, you should measure the latitude and longitude and orientation angle of the radar at the time of installation.
2. When measuring the direction of the radar, the deviation angle of the radar direction should be measured with 0° due north as the reference.



Bracket Installation

1. Use 4 screws to secure the bracket on the device.
2. Loosen the screws on each side on the bracket.
3. Adjust the device's pitch angle and secure the screws back.

2 Wiring



Installation Notes

1. Install the device according to the instructions in Quick Start Guide.
2. To prevent injury, this device must be securely attached to the installation surface in accordance with the installation instructions.
3. CAUTION: If the bracket is designed for a specific device model of our company, use the bracket with the corresponding device only. Use with other devices may result in instability and cause injury.

Note: After installation and wiring, all interfaces need to be wrapped with waterproof tape.

