

The logo features the word "HIKVISION" in a bold, italicized, white sans-serif font, centered within a red horizontal bar. The bar has a white diagonal stripe on the left side.

HIKVISION

**DS-3E3752F-H Switch
Installation Quick Start**

Legal statements

About this Document

- This Document includes instructions for using and managing the Product. Pictures, charts, images and all other information hereinafter are for description and explanation only.
- The information contained in the Document is subject to change, without notice, due to firmware updates or other reasons. Please find the latest version of the Document at the Hikvision website (<https://www.hikvision.com>). Unless otherwise agreed, Hangzhou Hikvision Digital Technology Co., Ltd. or its affiliates (hereinafter referred to as "Hikvision") makes no warranties, express or implied.
- Please use the Document with the guidance and assistance of professionals trained in supporting the Product.

About this product

This product can only enjoy the after-sales service support in the country or region where the purchase is made.

Acknowledgment of Intellectual Property Rights

- Hikvision owns the copyrights and/or patents related to the technology embodied in the Products described in this Document, which may include licenses obtained from third parties.
- Any part of the Document, including text, pictures, graphics, etc., belongs to Hikvision. No part of this Document may be excerpted, copied, translated, or modified in whole or in part by any means without written permission.
- **HIKVISION** and other Hikvision's trademarks and logos are the properties of Hikvision in various jurisdictions.
- Other trademarks and logos mentioned are the properties of their respective owners.

LEGAL DISCLAIMER

- TO THE MAXIMUM EXTENT PERMITTED BY APPLICABLE LAW, THIS DOCUMENT AND THE PRODUCT DESCRIBED, WITH ITS HARDWARE, SOFTWARE AND FIRMWARE, ARE PROVIDED "AS IS" AND "WITH ALL FAULTS AND ERRORS". HIKVISION MAKES NO WARRANTIES, EXPRESS OR IMPLIED, INCLUDING WITHOUT LIMITATION, MERCHANTABILITY, SATISFACTORY QUALITY, OR FITNESS FOR A PARTICULAR PURPOSE. THE USE OF THE PRODUCT BY YOU IS AT YOUR OWN RISK. IN NO EVENT WILL HIKVISION BE LIABLE TO YOU FOR ANY SPECIAL, CONSEQUENTIAL, INCIDENTAL, OR INDIRECT DAMAGES, INCLUDING, AMONG OTHERS, DAMAGES FOR LOSS OF BUSINESS PROFITS, BUSINESS INTERRUPTION, OR LOSS OF DATA, CORRUPTION OF SYSTEMS, OR LOSS OF DOCUMENTATION, WHETHER BASED ON BREACH OF CONTRACT, TORT (INCLUDING NEGLIGENCE), PRODUCT LIABILITY, OR OTHERWISE, IN CONNECTION WITH THE USE OF THE PRODUCT, EVEN IF HIKVISION HAS BEEN ADVISED OF THE POSSIBILITY OF SUCH DAMAGES OR LOSS.
- YOU ACKNOWLEDGE THAT THE NATURE OF THE INTERNET PROVIDES FOR INHERENT SECURITY RISKS, AND HIKVISION SHALL NOT TAKE ANY RESPONSIBILITIES FOR ABNORMAL OPERATION,

PRIVACY LEAKAGE OR OTHER DAMAGES RESULTING FROM CYBER-ATTACK, HACKER ATTACK, VIRUS INFECTION, OR OTHER INTERNET SECURITY RISKS; HOWEVER, HIKVISION WILL PROVIDE TIMELY TECHNICAL SUPPORT IF REQUIRED.



- YOU AGREE TO USE THIS PRODUCT IN COMPLIANCE WITH ALL APPLICABLE LAWS, AND YOU ARE SOLELY RESPONSIBLE FOR ENSURING THAT YOUR USE CONFORMS TO THE APPLICABLE LAW. ESPECIALLY, YOU ARE RESPONSIBLE, FOR USING THIS PRODUCT IN A MANNER THAT DOES NOT INFRINGE ON THE RIGHTS OF THIRD PARTIES, INCLUDING WITHOUT LIMITATION, RIGHTS OF PUBLICITY, INTELLECTUAL PROPERTY RIGHTS, OR DATA PROTECTION AND OTHER PRIVACY RIGHTS. YOU SHALL NOT USE THIS PRODUCT FOR ANY PROHIBITED END-USES, INCLUDING THE DEVELOPMENT OR PRODUCTION OF WEAPONS OF MASS DESTRUCTION, THE DEVELOPMENT OR PRODUCTION OF CHEMICAL OR BIOLOGICAL WEAPONS, ANY ACTIVITIES IN THE CONTEXT RELATED TO ANY NUCLEAR EXPLOSIVE OR UNSAFE NUCLEAR FUEL-CYCLE, OR IN SUPPORT OF HUMAN RIGHTS ABUSES.
- IN THE EVENT OF ANY CONFLICTS BETWEEN THIS DOCUMENT AND THE APPLICABLE LAW, THE LATTER PREVAILS.

© Hangzhou Hikvision Digital Technology Co., Ltd. All rights reserved.



- This document provides a brief guide for installing HIKVISION DS-3E3752F-H Switch. For more installation information, see HIKVISION DS-3E3752F-H Switch Installation Guide.
- The figures in this document are for illustration only.

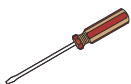
Symbols

| Convention | Description |
|-------------------------------------------------------------------------------------|-----------------------------------------------------------------------------------------------------------------------------------------------------------------|
|  | Provides additional information to emphasize or supplement important points of the main text. |
|  | Indicates a potentially hazardous situation, which if not avoided, could result in equipment damage, data loss, performance degradation, or unexpected results. |

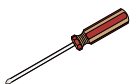
Tool list



The installation tools are not provided with the switch. Prepare them yourself as required.



Flat-blade screwdriver



Phillips screwdriver



Needle-nose pliers

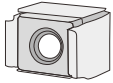


Marker



ESD wrist strap

Installation accessories



Cage nut
(user supplied)



M6 screw
(user supplied)



M4 counter-
sunk-head screw



Grounding screw



Grounding cable



Rubber feet



Mounting brackets



The applicable installation accessories vary by switch model. Some accessories are not provided with the switch. The packing list describes the accessories provided with the switch.



Wear an ESD wrist strap, and make sure the wrist strap makes good skin contact and is reliably grounded.

Mounting the switch in a rack

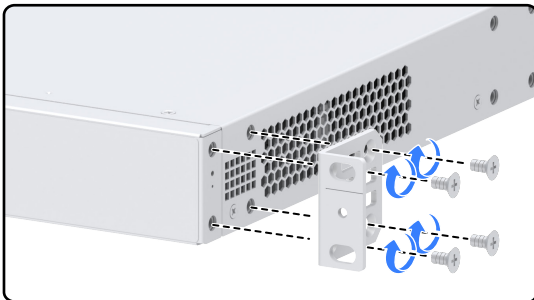


The DS-3E3752F-H switch provides two mounting bracket installation positions: one near the front panel and the other near the rear panel. Select an installation position for the mounting brackets based on the installation scenario.

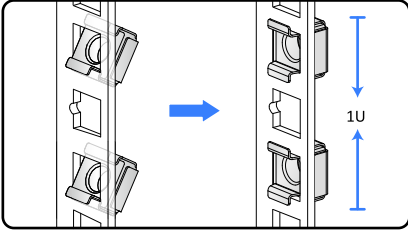


Four screws are required to attach a mounting bracket.

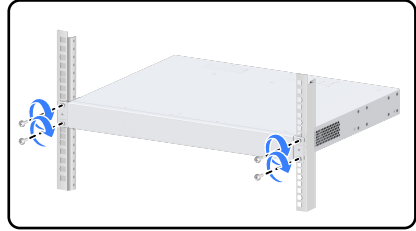
Attach the mounting brackets to the switch



Attach cage nuts to the rack posts

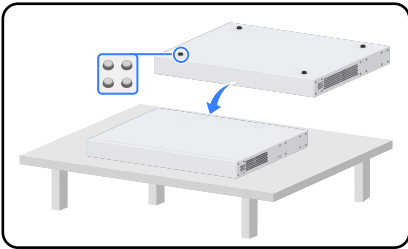


Mount the switch in the rack



Mounting the switch on a workbench

Attach the rubber feet to the switch bottom

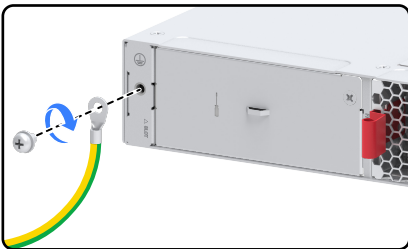


Grounding the switch

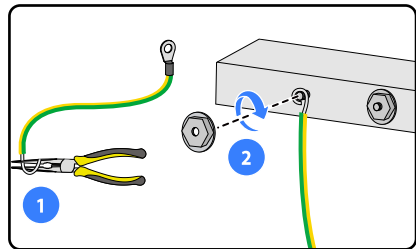


Correctly connecting the switch grounding cable is crucial to lightning protection and EMI protection. Use the grounding cable provided with the switch to ground the switch.

Connect the grounding cable to the switch



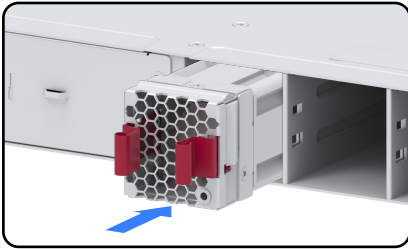
Connect the grounding cable to a grounding strip



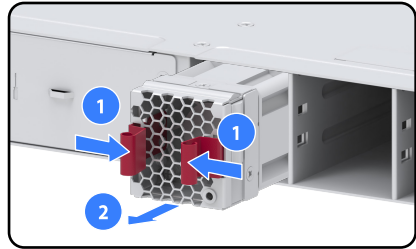
Installing and removing a fan tray

- Make sure the airflow direction of the fan tray is as required by the installation site. The fan tray with a blue handle provides power module-side intake and port-side exhaust airflow. The fan tray with a red handle provides port-side intake and power module-side exhaust airflow.
- Install two fan trays of the same model on the switch.
- Make sure the "TOP" mark stays on top when you install the fan tray.
- Make sure no slots are empty when the device is operating. Install modules or filler panels in empty slots.
- If two fan trays fail during device operation, finish replacing the fan trays within 2 minutes.
- If one fan tray fails and the operating temperature is not higher than 27 °C (80.6 °F), replace the fan tray within 24 hours, and make sure the failed fan tray is in position before replacing it. If the operating temperature is higher than 27 °C (80.6 °F), replace the the fan tray immediately.

Install a fan tray

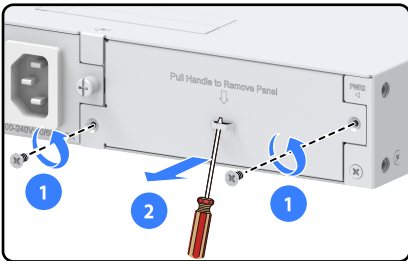


Remove a fan tray

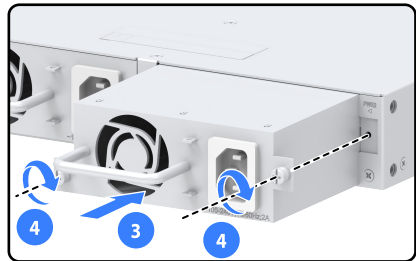


Installing a power module

Remove a filler panel (skip this step if no filler panel is in the power module slot)



Install a power module

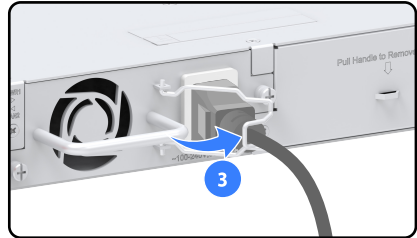
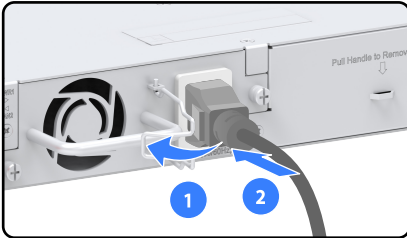


Connecting the power cord

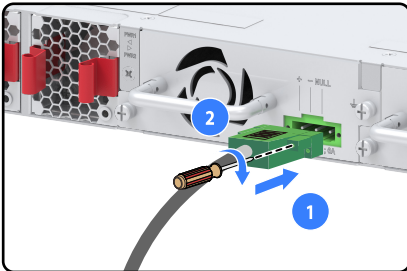


- Before connecting the power cord, make sure the switch is reliably grounded.
- To avoid bodily injury, connect the power cord first to the switch and then to the equipment-room power supply system.
- The power cord varies by power module. Do not mix power cords.

Connecting the power cord for an AC power module



Connecting the power cord for a DC power module

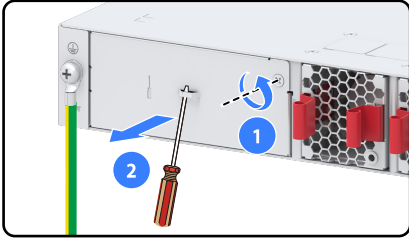


Installing an interface module



- To avoid damage, do not touch the electronic components on an expansion card.
- Various types of expansion cards are available for the switch. The installation method varies by expansion card type. Select an installation method as required.
- Make sure each slot has a module or filler panel installed when the switch is operating.

Remove the filler panel



Install an expansion card

